

Eukaryote Cells

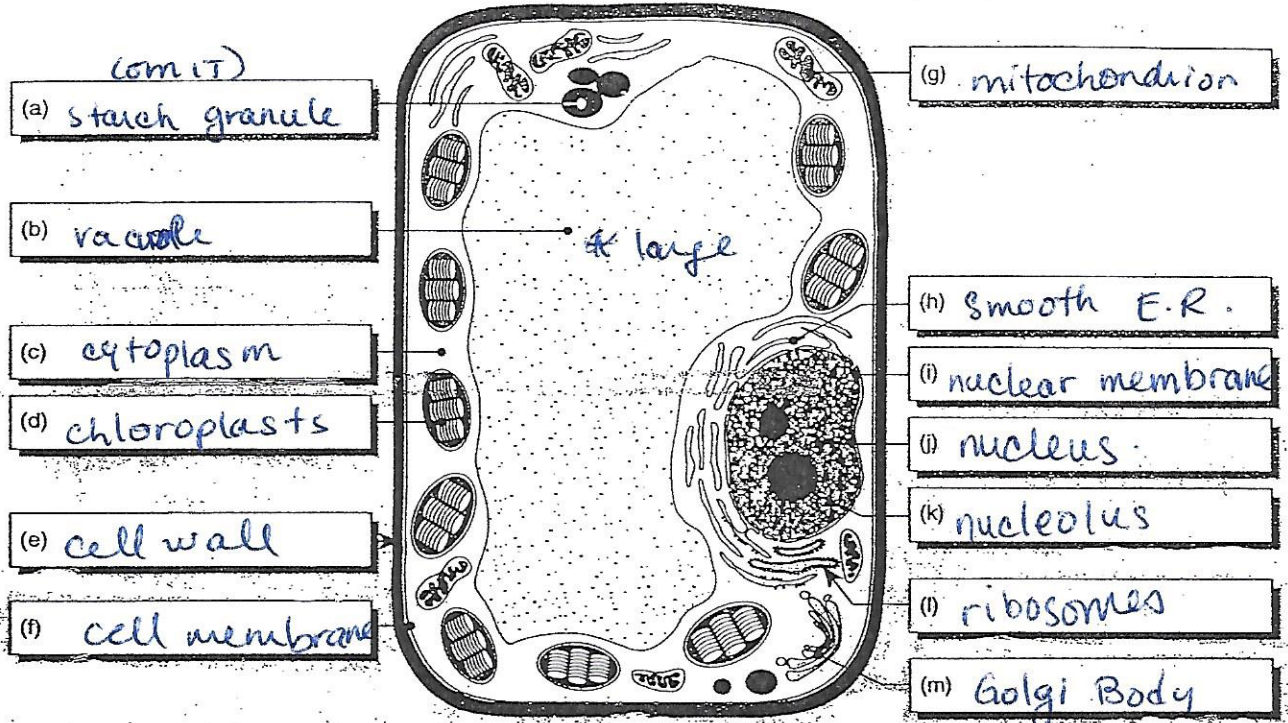
From the word lists, use your textbook and other references to identify and label the organelles depicted in the diagrams

of the cells below. The diagrams show many of the organelles and structures that are listed on the next two pages.

Generalised Plant Cell

WORD LIST

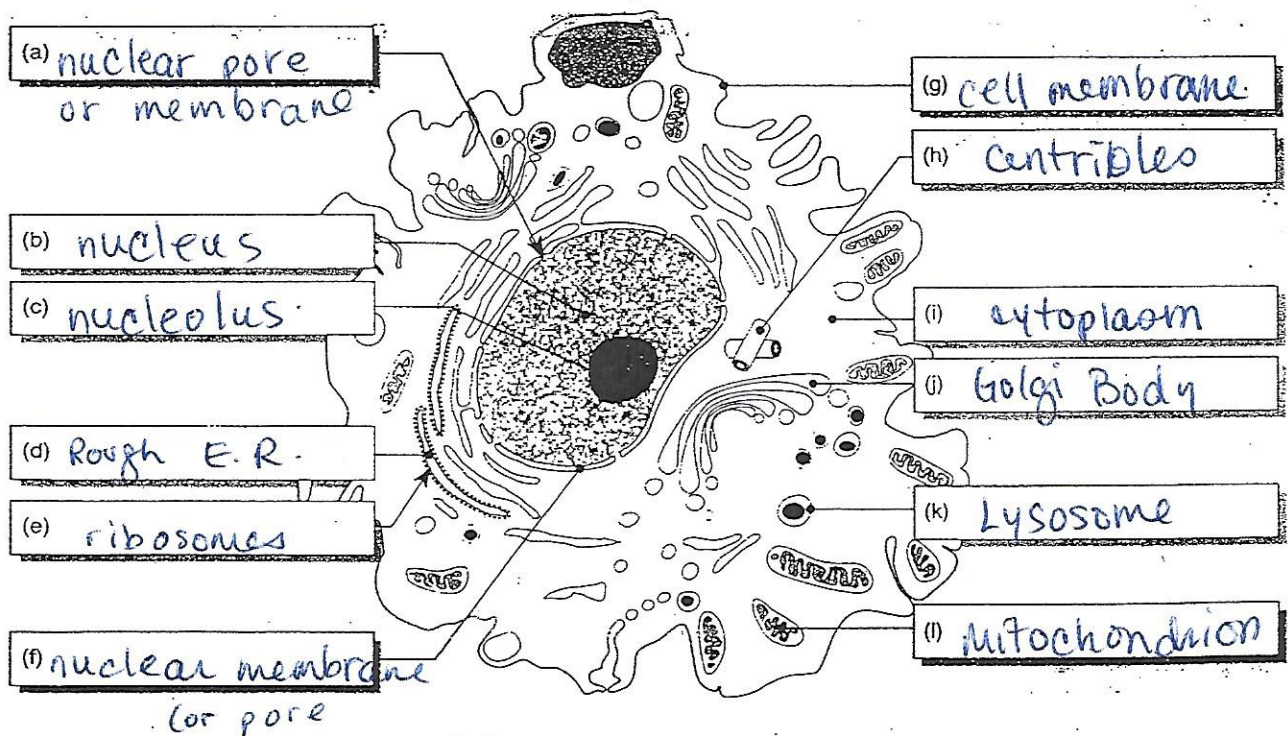
Vacuole, mitochondrion, cell wall, cell membrane, nucleus, nucleolus, nuclear membrane, golgi apparatus, endoplasmic reticulum, cytoplasm, starch granule, ribosomes, chloroplast



Generalised Animal Cell

WORD LIST

Lysosome, mitochondrion, cell membrane, nucleus, nucleolus, Nuclear membrane, nuclear pore, golgi apparatus, endoplasmic reticulum, cytoplasm, centriole, ribosomes



PARTS OF THE CELL—MATCHING

Match the descriptions in Column I with the name in Column II.

Column I

1. holds nucleus together
2. surface for chemical activity
3. units of heredity
4. digestion center
5. where proteins are made
6. structures involved in mitosis in animal cells only
7. hollow cylinder that supports and shapes cell
8. shapes and supports a plant cell
9. stores and releases chemicals
10. food for plant cells is made here
11. spherical body within nucleus
12. controls entry into and out of cell
13. traps light and is used to produce food for plants
14. chromosomes are found here
15. jellylike substance within cell
16. contains code which guides all cell activities
17. minute hole in nuclear membrane
18. "powerhouse" of cell
19. contains water and dissolved minerals
20. stores food or contains pigment

Column II

- a. Golgi bodies
- b. nucleus
- c. chromosomes
- d. vacuole
- e. ribosomes
- f. endoplasmic reticulum
- g. nuclear membrane
- h. centrioles
- k. cytoplasm
- j. chlorophyll
- k. chloroplasts
- l. cell (plasma) membrane
- m. cell wall
- n. mitochondria
- o. lysosome
- p. genes
- q. nuclear pore
- r. nucleolus
- s. plastid
- t. microtubule

g
f
p
o
e
h
t
m
a
k
r
l
j
b
i
c
q
n
d
s

FUNCTION OF THE ORGANELLES

Which organelle performs each of the following functions within the cell?

Function

1. Controls the movement into and out of the cell
2. Watery material which contains many of the materials involved in cell metabolism
3. Serves as a pathway for the transport of materials throughout the cell; also associated with synthesis and storage
4. Serves as the control center for cell metabolism and reproduction
5. Sites of protein synthesis
6. Involved in the digestion of food within the cell
7. The "powerhouse" of the cell
8. Serves as storage centers for the secretory products of the cell
9. Involved in cell division in animal cells
10. Fluid filled organelles enclosed by a membrane; contains stored food or wastes
11. Site of the production of ribosomes
12. Controls movement into and out of the nucleus
13. Gives the cell its shape and provides protection; not found in animal cells
14. Hairlike structures with the capacity for movement
15. A long, hairlike structure used for movement
16. Site of photosynthesis
17. During cytokinesis, new cell wall forms on both sides
18. rod-shaped bodies that carry genetic information

Organelle

1. cell membrane
2. cytoplasm
3. endoplasmic reticulum
4. nucleus
5. ribosomes
6. lysosomes
7. mitochondria
8. golgi bodies
9. centrioles
10. vacuoles
11. nucleolus
12. nuclear membrane
13. cell wall
14. cilia
15. flagellum
16. chloroplast
17. cell plate
18. chromosomes